

Ugglets Boots

Twill bound faux sheepskin boots with soles
Adult shoe sizes 4-5, 7-7 ½, 8

Materials Required:

- ½ yard ultra suede faced Sherpa
- 1/8 yd. very stiff interfacing/crinoline for heel.
- 1/8 yd. plain Sherpa or felt for inner heel.
- 28" of 1" twill tape or bias binding.
- 1 EVA Foam Square to cut soles from
 - optional ½-1" thick foam padding if desired



Shoe Goo adhesive (for gluing soles)

You can find it at Walmart where the shoelaces and such are.

In the shoe dept. Abt. 4.00 a tube

Aleene's Fabric Adhesive (for edge gluing)

In Walmart's craft section. Abt. 3.50 a tube



EVA Foam mats used for soles. Each square Mat makes 6 - size 8 pairs (12 soles).

Pattern Pieces Provided at the end of this document:

Pieces given:

Sole (for fashion fabric and foam)

Heel

Top of foot

Front ankle panel

Inner / outer side panels

Cuff

cut 2 of each pattern piece with the exception of the side panels – cut four (two to a boot), You will need 2 cuff pieces but cut with fabric folded at fold line before cutting. As usual, you can cut two at once, with right sides of fabric facing together, for convenience.

From the EVA foam, cut 2 soles. First by cutting one, then flipping the pattern piece for the left foot, and cutting a second one. While a utility knife works very well for cutting out the foam on the first pass, it will not trim up as easily. So, any additional shaping should be done with sandpaper. I used a dremel sanding drum to further shape and refine the cuts. The foam sands very easily.

The sewn fabric boot will be glued to this piece later using adhesives above. I lightly scored the smooth side of the foam before coating with the glue. The traction side of the foam makes good traction for the bottom of the boot and was left as is.

Shoe goo works really well but will not glue the last few edges up well. Once the shoe goo has dried, you can go back and touch up with Aleene's glue shown above. While this glue will hold the taped outer edges to the foam, it's not strong enough for the entire sole - Shoe goo is.

It helps when gluing, to spread the Shoo Goo on as thickly as possible without it running out, then use straight pins pushed in at angles all around the shoe to hold it down until the glue dries. I also placed weights inside to aid contact between the boot fabric soles and the rubber soles. The goo can take up to 24 hours to dry completely. The glue has a strong odor and should be used in a ventilated area.

Sewing Instructions

Special Notes for the Heel:

Cut 2 heels from fashion fabric (one flipped for left foot)

+ 2 heels of a heavyweight interfacing or crinoline

+ 2 of felt, fleece, or something similarly soft for the inside of the boot at the heel.

This is what the heel of the foot will touch – so it should be something soft.

After embellishing the outer facing of the heel piece as desired (in my case, I appliquéd a leather eagle on it):

- Sandwich one piece of interfacing between the outer heel piece of fashion fabric and the soft inner heel piece cut. When heel layers are basted together, the heel unit will need to stand up on it's own as it supports the back structure of the boot so a stiff interfacing needs to be used.
- Baste around the edges to join layers using an 1/8" seam allowance all around - prior to following sewing instructions below to assemble the boot.

All seams are sewn with wrong sides together, using a ¼ "seam allowance.

1. Sew **front ankle panel to foot top** with side **A** and side **B** together. This piece covers the top of the foot and front of the ankle / shin bone.
2. Sew **side panels together along back seam** (longest edge with + B + +). This makes the back unit of the boots to cover the back of the ankle and calf portion.
3. When you open the side panels out flat, there will be a "U" shaped curved edge, the bottom of the "U" ← will go against the upper curved edge of the heel. See original boot picture below to visualize.
4. Sew the **heel to the back of the curved sewn side panels**, matching the top Center of the Heel (pattern paper 'B' edge) with the already seamed center of the calf panel, (sewn in step 2).

Note: On the original boot the heel piece is sewn flat (appliqué fashion) to the sewn calf panel. I found this difficult to do on a machine and instead, sewed the heel piece on placing wrong sides together. If sewn by hand, you can accomplish the appliqué style of attaching the heel piece more easily.

5. You now have a completed **front panel** and **back panel**. Line up along each side and **sew with wrong sides together**. *Note:* The heel to calf seam will fall about an inch lower than the foot top and front ankle piece seam. This is the way it's supposed to look. I've included a picture of the original boot the pattern was taken from, so you can more easily view how the pieces go together.

The last piece sewn together is the **boot body to the fashion fabric sole piece**. Prior to attaching in step 6, you may want to sew a piece of urethane foam, cut from the sole pattern piece, to the underside of the fabric sole for extra cushioning.

6. **To attach the fashion fabric sole piece to the body of the boot:** Pin the center of the foot top (at toe end) to the center of the sole at toe end. Pin the back of heel portion to the heel center back of Sole. Pin marked notch locations on the sides of the heel portions of the soles with the side seams of the boot bodies. *The outside edge of the boot should line up with the outside edge of the sole as you are sewing. Sew with a walking foot or by using an awl and easing in the boot body to the sole.*
7. Use a 1” twill tape or bias tape and **bind the sole edges of the boot and topstitch.**
8. **Sew cuff ends together, then sew cuff to the top of the boot,** wrong sides together. When the cuff is flipped down over the boot, the seam will be hidden. *Note:* The original boot had a twill binding and not a cuff. A 2” cuff pattern piece is given to allow for a double fold to conceal raw edge of cuff.

Once the sewing portion is completed, glue the sole portion of the boot to the EVA foam sole - pinning and gluing as stated above. Allow to dry for 24 hours before use.

Repeat instructions for left boot.

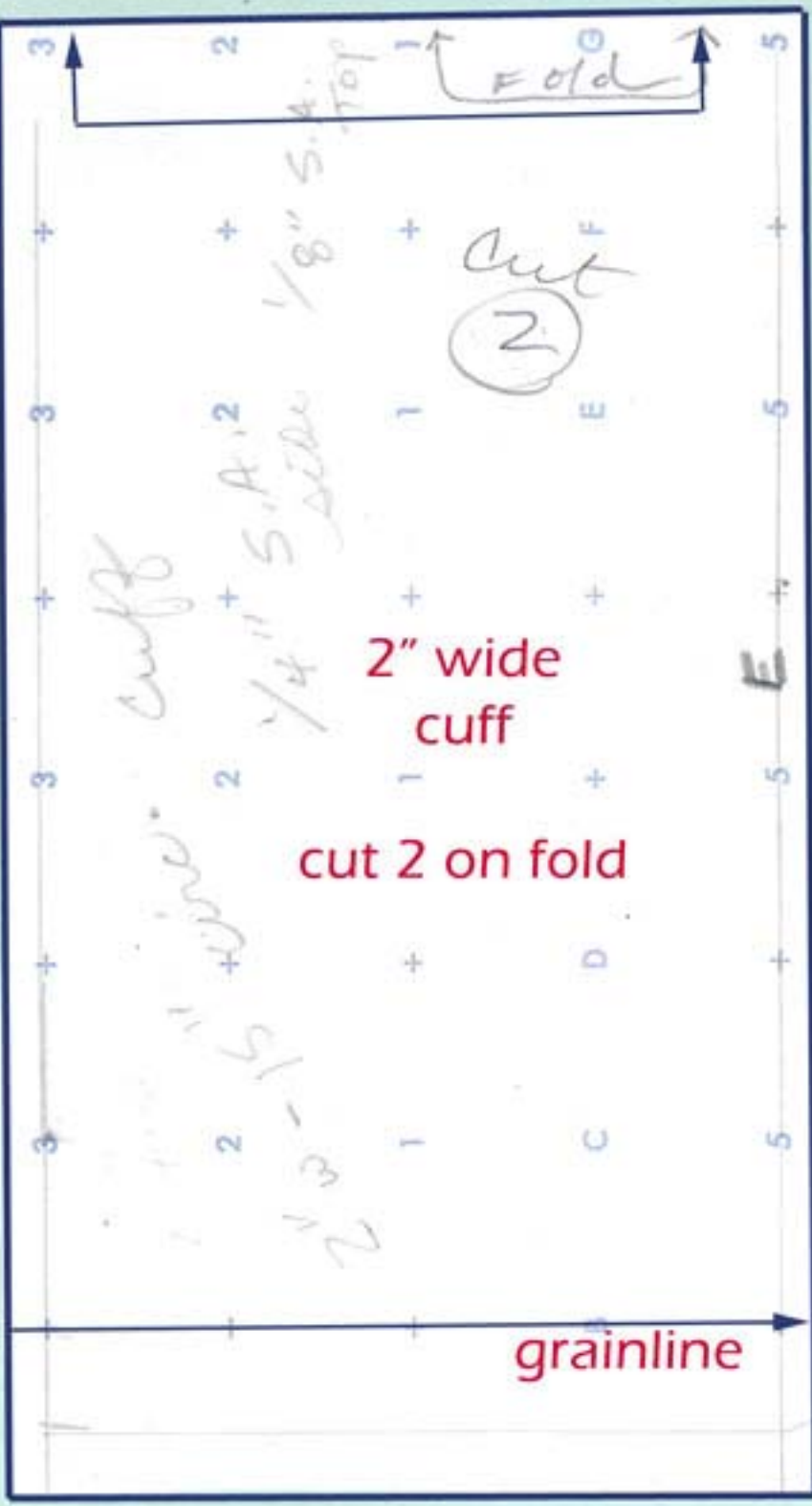
Additional Notes:

These boots can be washed in the washing machine on gentle cycle.

The Sueded Sherpa fleece for sale in fabric stores is approx. 1/3 the weight of the actual sheep skin used in the original boot pattern was made from. Because of this, the boots are a little softer and floppier than the original boot. However, they are comfortable to wear and the EVA bottoms allow them to be worn outdoors. Another neat addition would be to use knit for the cuffs instead of fleece, however the cuffs stay up on their own as is.



Original Boot



cuff

2 1/4" S.A. side

1/8" S.A. Top

2" wide cuff

cut 2 on fold

grainline

cut 2

F

E

+

+

D

C

E

Fold

3

2

1

3

2

1

3

2

1

3

2

1

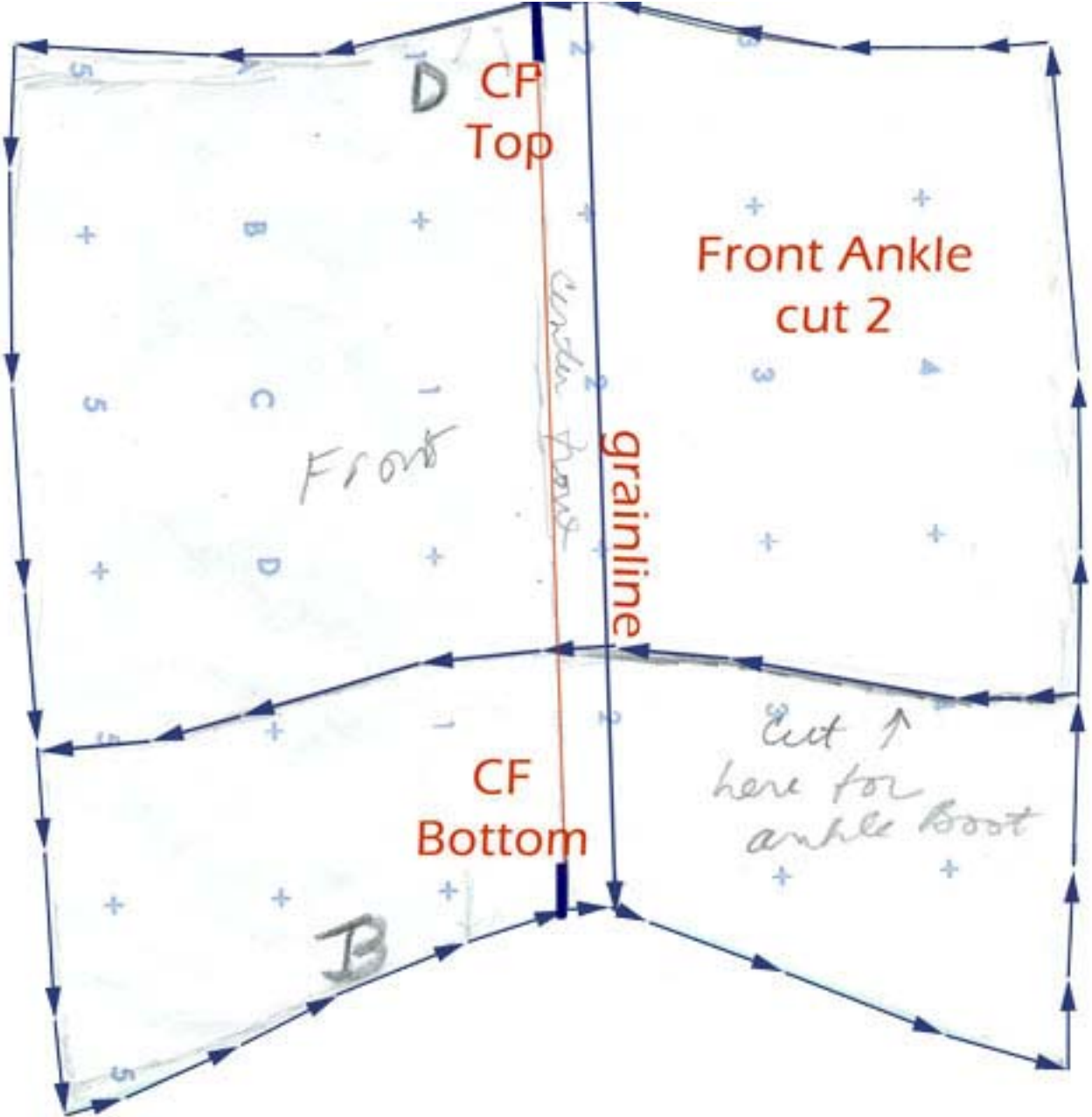
5

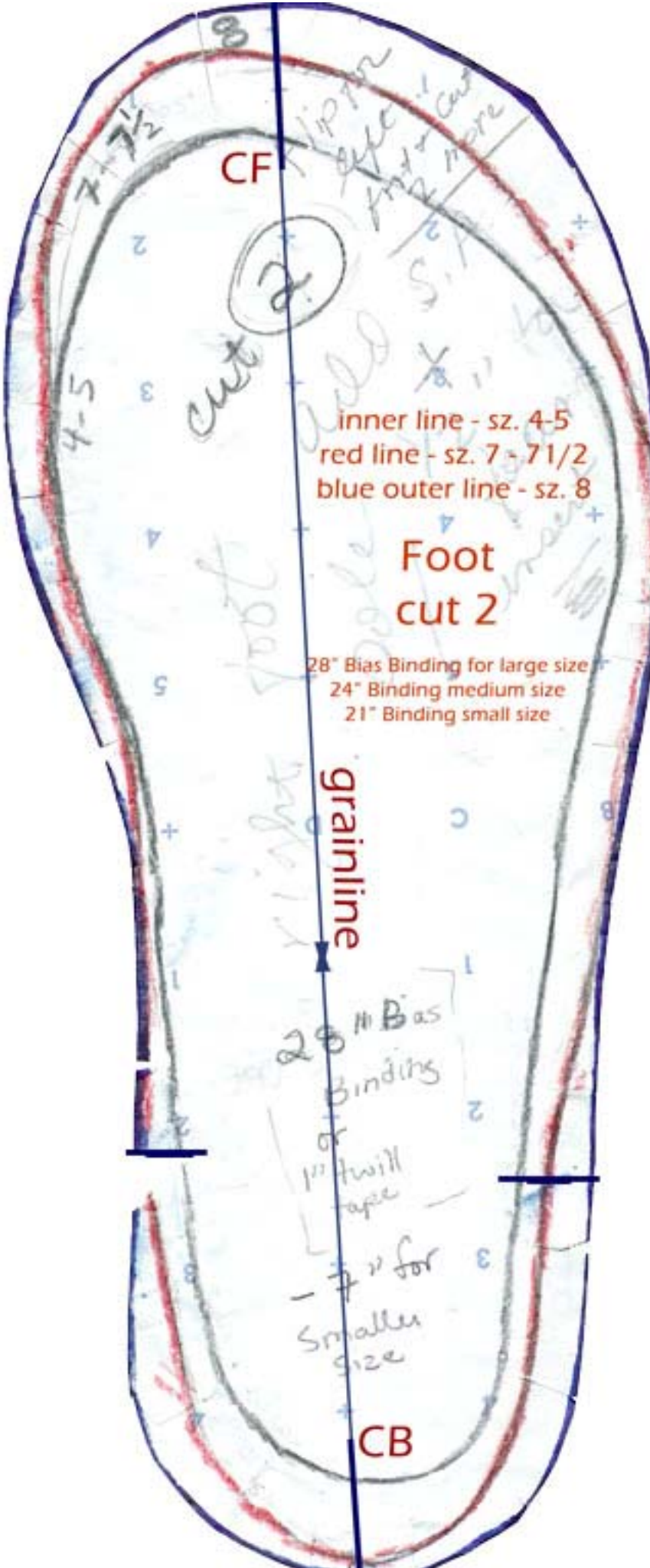
5

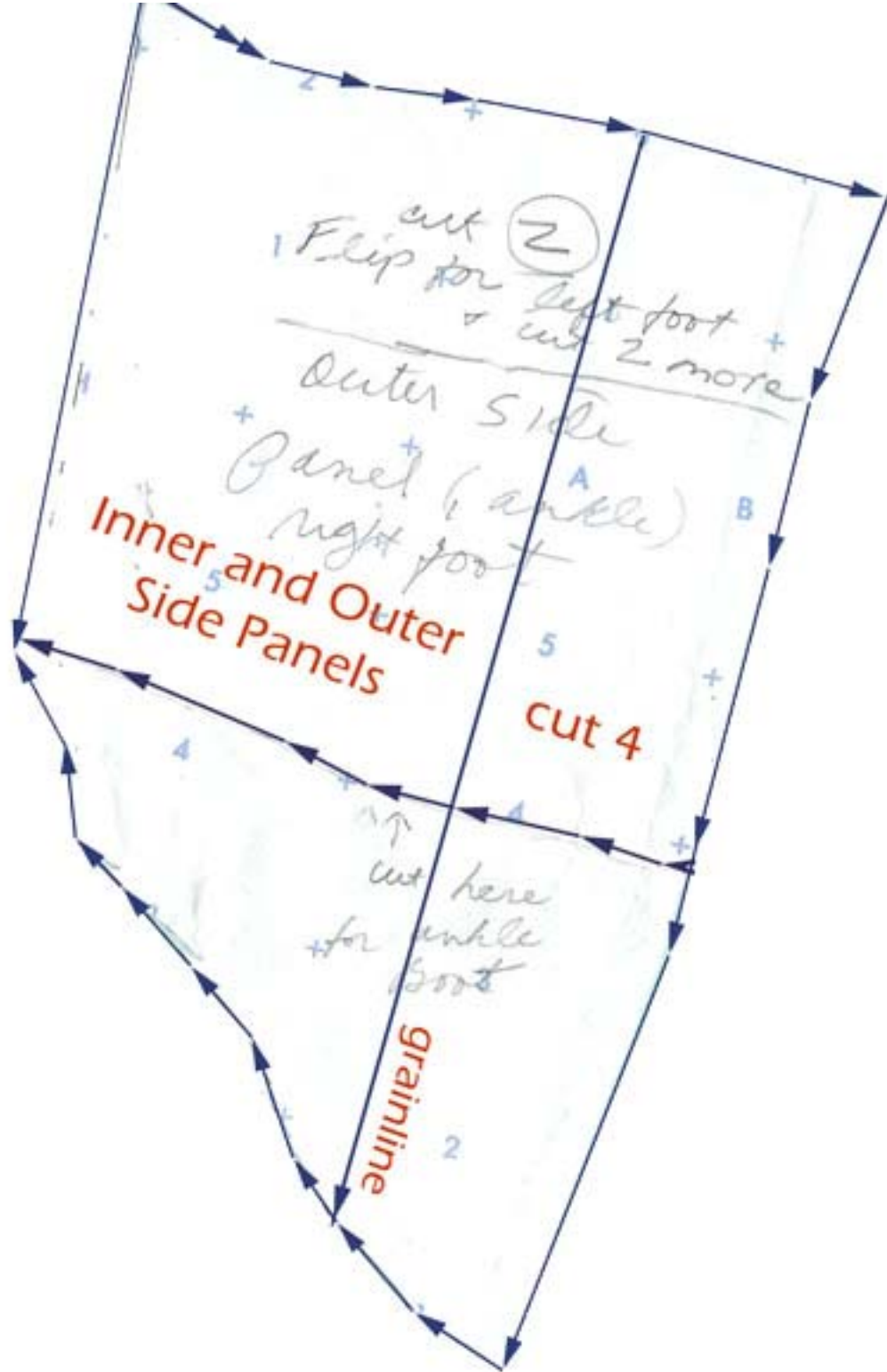
5

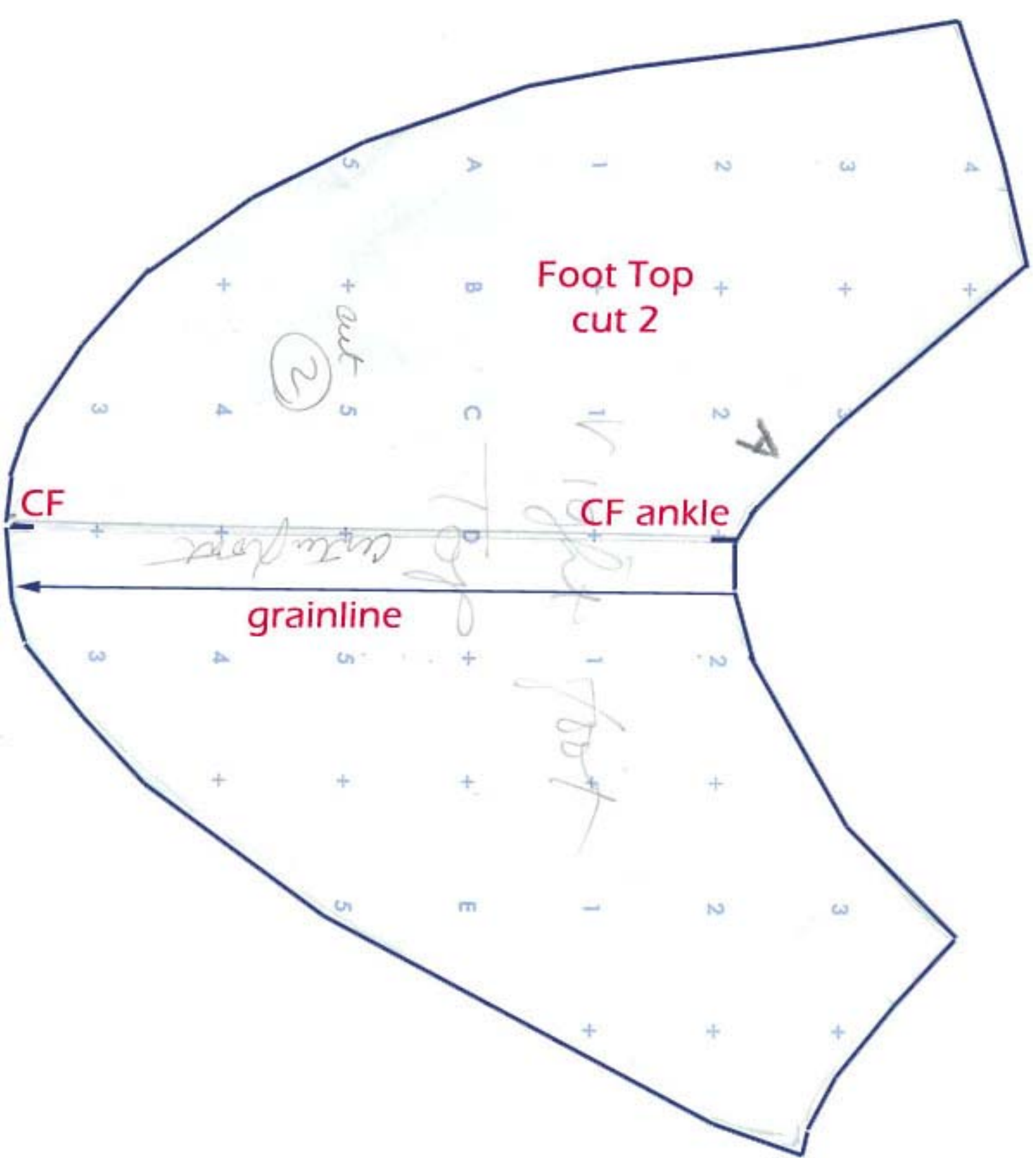
5

5









* If your printer cuts off the above pattern piece because of margin printing, then print the next two pages and join the pattern piece together by taping left side of piece 1 with right side of piece 2.

